

# SYSTEM GUIDE

## Super Light Terrazzo

### INTERIOR MONOLITHIC UNDERLAYMENT DECK COVERING

#### Overview

SynDeck™ Super Light Terrazzo System is an easy to apply system designed for interior decks. This is a vibrant underlayment epoxy flooring system with excellent adhesion and corrosion resistance. It is designed to meet the IMO and military specification requirements. Various terrazzo color blends are available to provide a unique aesthetic appeal to deck areas, primarily wet spaces, such as showers, toilets, and wash basins.

#### Approval

- IMO
- ABS
- MIL-SPEC

#### Where to Use

- Passageways
- Wet Spaces
- Galleys
- Living Quarters

#### Product Application

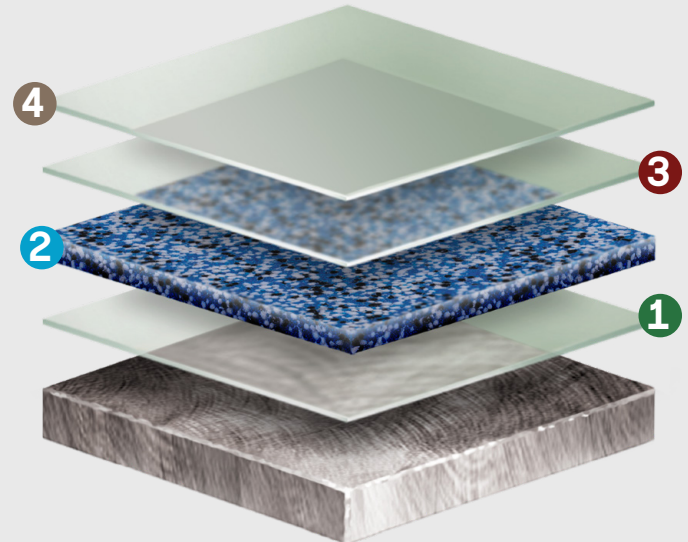
Before

After

Close-up



#### System Layers



#### System Products

1. SynDeck™ Bond Coat SS1222
2. SynDeck™ Ultra Lightweight Terrazzo SS1290FCT
3. SynDeck™ Super Underlayment Sealer
4. SynDeck™ IMO Epoxy Clear SS5000

#### Benefits

- Waterproof
- Durable decorative finish
- Slip resistance
- Fast return to service
- Deck leveling

[syndeckmarine.com](http://syndeckmarine.com) | 1.877.993.7627 | [info@syndeckmarine.com](mailto:info@syndeckmarine.com)

**SynDeck™**

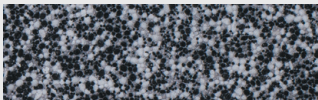
Marine Underlayment  
and Deck Coatings

# SYSTEM GUIDE

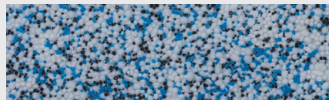
## Super Light Terrazzo

### INTERIOR MONOLITHIC UNDERLAYMENT DECK COVERING

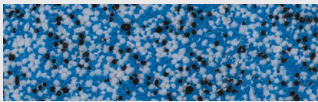
#### Standard Color Options



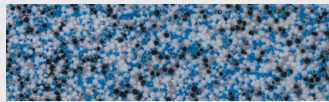
**Tuxedo**



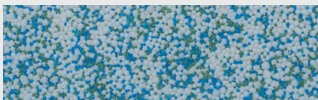
**Sea Spray**



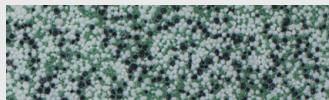
**Whirlpool**



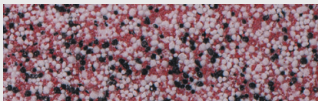
**Mountain Peak**



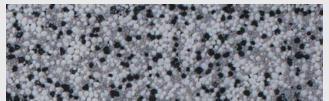
**Tropical Lagoon**



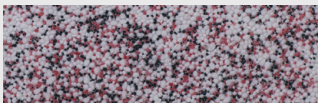
**Clover Meadow**



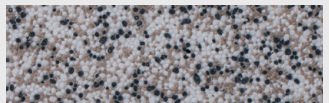
**Hot Rod**



**Newsprint**



**Snowy Barn**



**Calico**



**Canyon Wall**



**Cotton Seed**

*Colors shown are approximate representations.  
Actual results will vary.*

*Please contact your SynDeck™ representative for a full range of special and custom colors along with complete pricing and availability.*

#### Available Tests

- MIL-PRF-32584 – Corrosion Resistance
- MIL-PRF-32584 – Impact & Indentation
- ASTM F1914 – Indentation
- ASTM C579 – Compressive Strength of Mortars
- ASTM C580 – Flexural Strength of Mortars
- ASTM D4541 – Pull-Off Strength of Coatings
- ASTM D523 – Gloss
- ASTM D2240 – Hardness (Shore D)
- ASTM D4060 – Abrasion (CS-17, 1000g, 1000 cycles)
- ASTM D1894 – Coefficient of Friction
- Moisture Absorption
- Resistance to Moisture & Temperature Changes