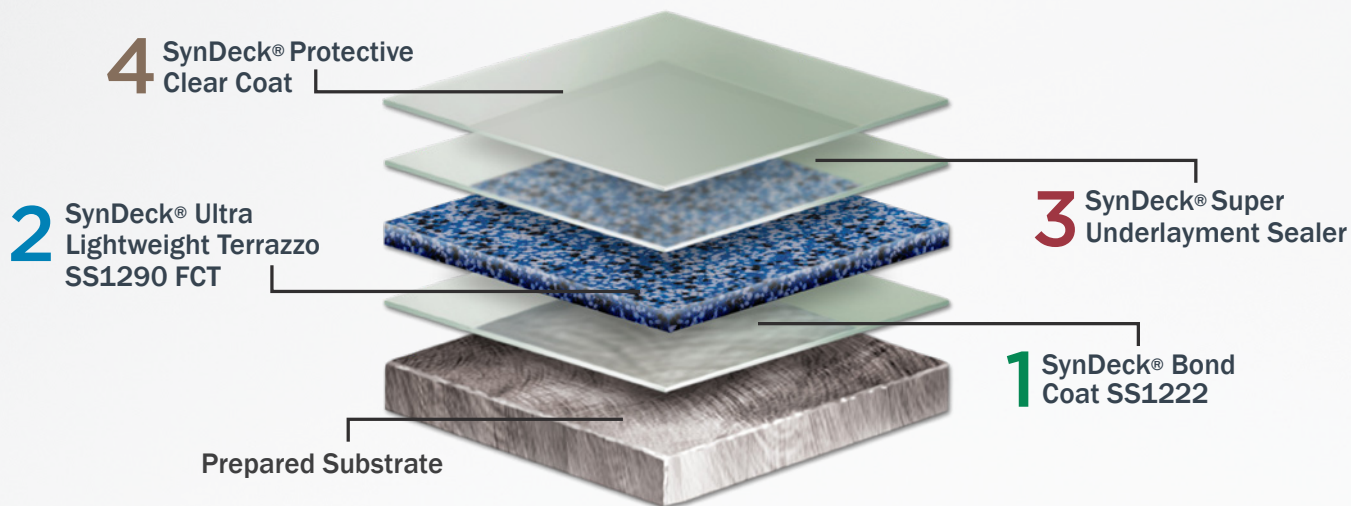


# System Guide: Super Light Terrazzo System

## Resin System Coatings



PRODUCT	DESCRIPTION & USE
<b>1 BOND COAT SS1222</b>	<ul style="list-style-type: none"> <li>• Primer material and bond promoter.</li> <li>• Long open time epoxy with ease of use.</li> <li>• Specifically designed to be used in conjunction with installation of underlayment material.</li> </ul>
<b>2 ULTRA LIGHTWEIGHT TERRAZZO SS1290FCT</b>	<ul style="list-style-type: none"> <li>• Three (3) component, aggregate-filled, 100% solids, amine-cured epoxy flooring material.</li> <li>• Can be applied as an ultra lightweight underlayment providing a decorative surface.</li> <li>• US patented composition<sup>1</sup>.</li> </ul>
<b>3 SUPER UNDERLAYMENT SEALER</b>	<ul style="list-style-type: none"> <li>• Two (2) component, high thixotropic index epoxy formulated for low odor and easy application.</li> <li>• Specifically designed to seal decks, floors and other surfaces where higher porosities may be of concern.</li> </ul>
<b>4 PROTECTIVE CLEAR COAT</b>	<ul style="list-style-type: none"> <li>• Very low odor, water clear, epoxy top coat.</li> <li>• User-friendly and abrasion resistant with excellent adhesion. Cures to a resilient high-gloss film and is available in clear and colors.</li> <li>• Coatings available suitable for UV light exposure.</li> </ul>

## Key Benefits



**Streamlined system** installs in fewer coating steps for short turnaround time



**Waterproof system** provides a longer lasting solution.



**All components** are **IMO certified** and **US Navy approved**



**Durable, attractive finish** resembles marble or quartz

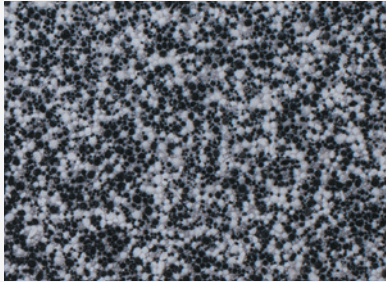


**Slip resistant finishes** can be created.

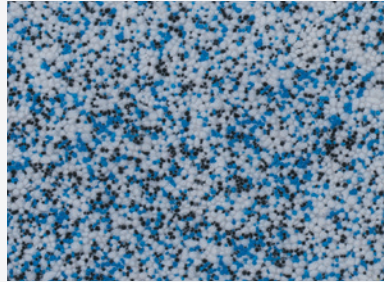
<sup>1</sup>US patent number provided on request.

# SynDeck® Ultra Lightweight Terrazzo Colors

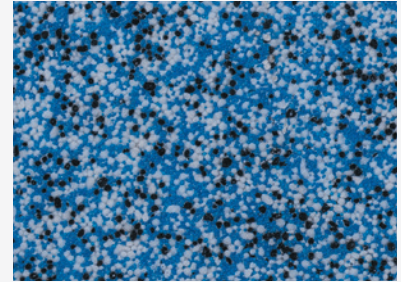
SynDeck Ultra Lightweight Terrazzo's special aggregates offer unique color blends to enhance the aesthetic appeal of deck areas.



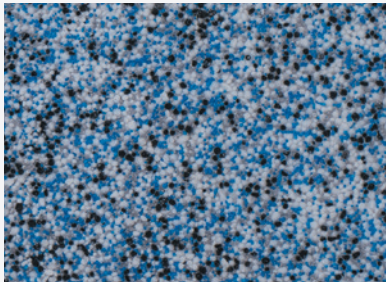
Tuxedo



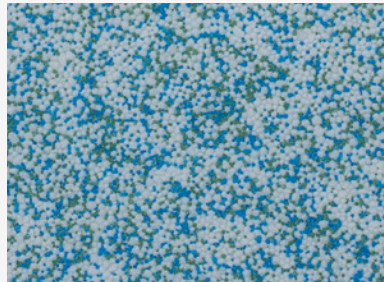
Sea Spray



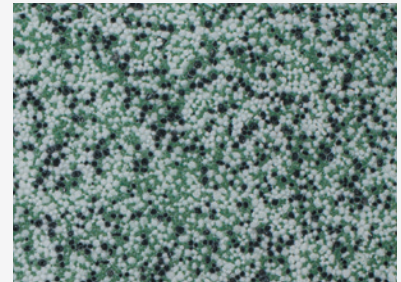
Whirlpool



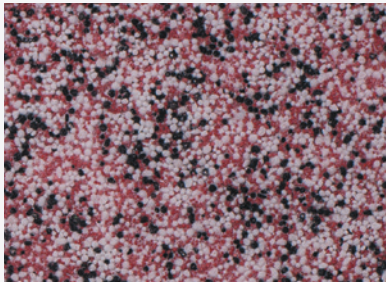
Mountain Peak



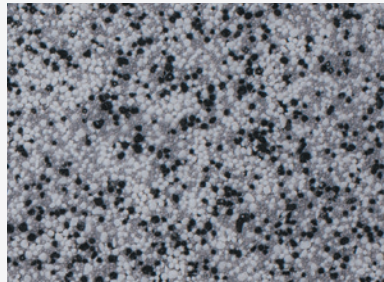
Tropical Lagoon



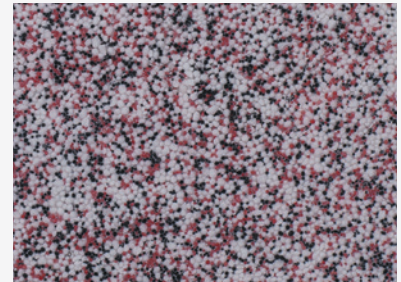
Clover Meadow



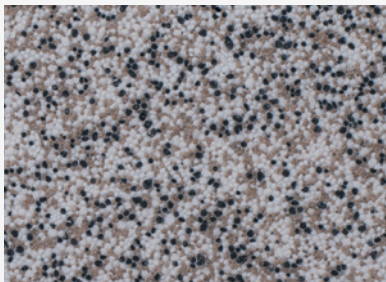
Hot Rod



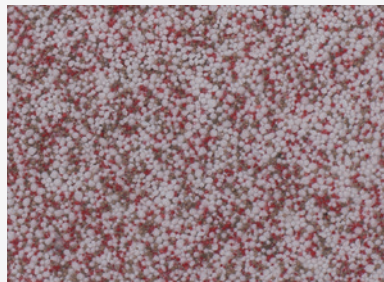
Newsprint



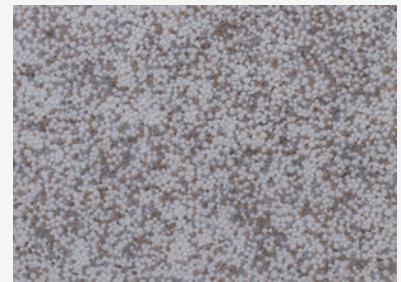
Snowy Barn



Calico



Canyon Wall



Cotton Seed

Ultra Lightweight Terrazzo color blend reproduction approximates actual colors and patterns. Slight variations may occur in actual projects. Final approvals should be made from physical sample.

Rev 10/28/19

Manufactured by:



📞 US: 1.877.993.7627

📞 INTL: +1 562.946.8781

📞 UK: +44 (0) 7774 725006

✉️ [info@syndeckmarine.com](mailto:info@syndeckmarine.com)

🌐 [syndeckmarine.com](http://syndeckmarine.com)